

Important Template Disclosure:

File may NOT print at 100% accuracy. Please refer to measurements when drilling final holes.

Please email info@lockeyusa.com for a faxed or mailed template due to .pdf file printing with possible inaccuracies.

PLEASE CHECK MEASUREMENTS BEFORE DRILLING!

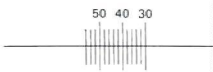
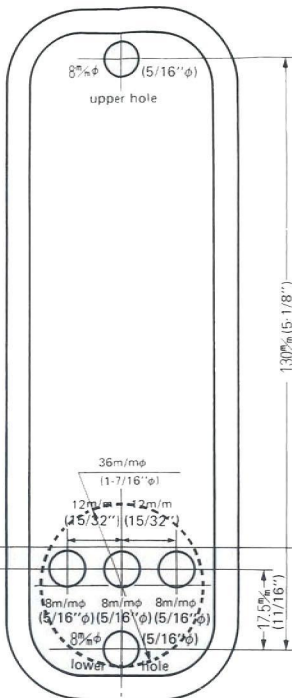
Please scroll down to view templates.

Fold along the edge of door

FOR BACK SET 70M/M (2-3/4")

folding line of "For Right Hand Door"

folding line of "For Left Hand Door"



Mark in slot for 22mm (55/64") hole at center of door edge

Mark in slot for 22mm (55/64") hole at center of door edge.



Back set 70mm (2-3/4")

Back set 70mm (2-3/4")

For Right Hand Door

For Left Hand Door

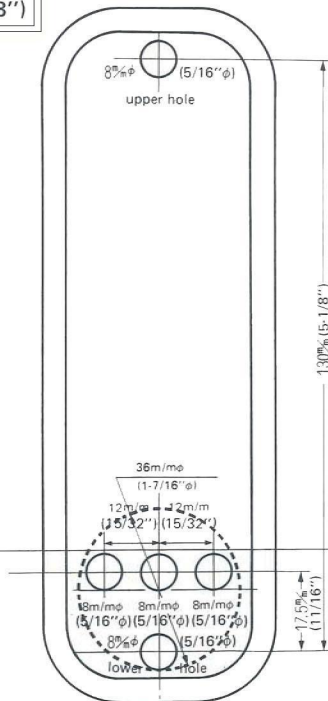
DIGITAL DOOR LOCK

FOR BACK SET 60M/M (2-3/8")

TEMPLATE FOR 2210
WITH 25.4mm (1") THROW

folding line of "For Right Hand Door"

folding line of "For Left Hand Door"



13 3/8" (5-1/8")

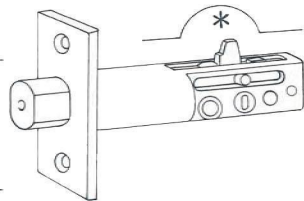
17 5/8" (11/16")

Back Set 60mm (2-3/8")

Back Set 60mm (2-3/8")

For Right Hand Door

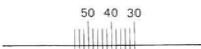
For Left Hand Door



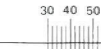
2. Ensure you drill hole in door frame deep enough to accept the 25.4mm (1") throw.

IMPORTANT

1. You must ensure that inside of 22mm (55/64") mortise hole is enlarged by moving wood drill up and down or using a small chisel – This is to give clearance for movement of 'CAM' which moves up as deadbolt is thrown (as shown in diagram below *) – check clearance required by turning spindle in deadbolt and view movement of cam.



Mark in slot for 22mm (55/64") hole at center of door edge



Mark in slot for 22mm (55/64") hole at center of door edge.

