

IV HOW TO USE THE DIGITAL DOOR LOCK, "SUPER-8"

1. When the door is closed, the "SUPER-8" locks automatically.
2. From the inside, unlock using the lever handle.
3. From the outside, unlock by pressing the correct code and then using the lever handle.

"HOLDBACK" DEVICE

The holdback holds the latch bolt head back; this is very convenient. When using the code is not always necessary.

TO OPERATE

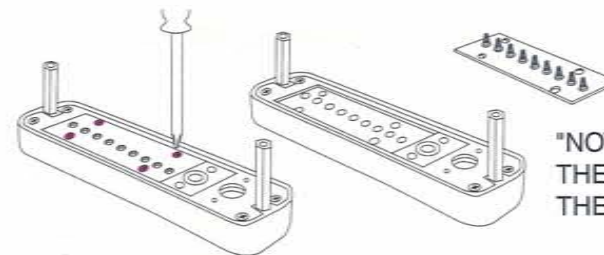
Pull the inside handle down until the latch bolt head retracts fully, and push the holdback down.

To restore push up the holdback.

V HOW TO CHANGE THE CODE NUMBER

**TO PREVENT ANY PROBLEMS OR DAMAGE,
READ THE FOLLOWING INSTRUCTIONS BEFORE CHANGING YOUR CODE**

Hold the front lock body in the horizontal position.
Remove the 4 red screws and take the lid off carefully.



"NOTE
THERE ARE 9 SPRINGS IN
THE BACK OF THE LID.

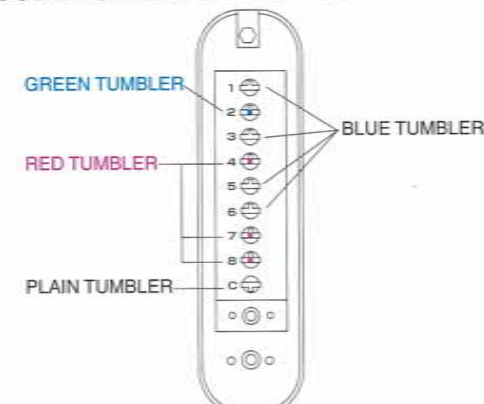
THE CODE TUMBLER

THE GREEN COLOURED ARE THE TUMBLERS FOR 'DOUBLE PUSHING'
THE RED COLOURED ARE THE TUMBLERS FOR 'SINGLE PUSHING'
THE BLUE COLOURED ARE KEYLESS TUMBLERS 'NON-CODE'
THE PLAIN TUMBLER IS THE 'C' BUTTON (TO CLEAR) NEVER REMOVE THIS TUMBLER

FOR EXAMPLE THIS "CODE NUMBER" IS MADE UP OF THE "C" TO
CLEAR THEN 22478

WHILST PUSHING IN THE 'C' BUTTON, AND USING THE TWEEZERS
PROVIDED, PLACE YOUR CODE TUMBLERS INTO POSITION

GREEN IN HOLE NO.2 RED
IN HOLE'S NO.4,7&8
BLUE IN THE REMAINING

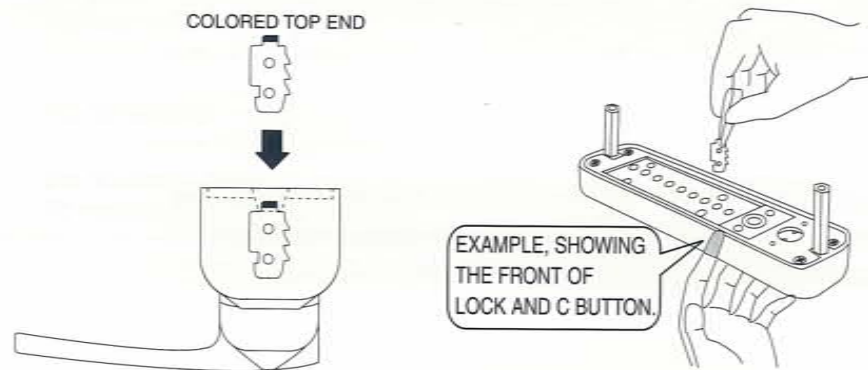


V HOW TO CHANGE THE CODE NUMBER

TO INCREASE AND DECREASE THE NUMBER OF DIGITS USED IN YOUR CODE ADD MORE RED AND GREEN TO INCREASE, ADD MORE BLUE TO DECREASE.

IT IS VERY IMPORTANT TO REPLACE THE CODE TUMBLERS IN THE CORRECT WAY. THE COLORED TOP END MUST ALWAYS FACE UPWARDS. AND THE SIDE OF THE TUMBLER THAT HAS THE RAISED NOTCHES MUST FACE TOWARD THE TOP OF THE LOCK.

REMEMBER TO KEEP THE 'C' PRESSED IN WHILE REMOVING AND REPLACING THE TUMBLERS.



REPLACE THE PLATE CAREFULLY AND NOW TEST YOUR CODE BEFORE REPLACING IT ON THE DOOR.

MEMO

WHEN YOU CHANGED THE CODE NUMBER, PLEASE WRITE DOWN THE NEW NUMBER IN THE FOLLOWING FOR YOUR MEMORY.

① _____

② _____